

Clear Creek Riparian Management Education and Demonstration Grant

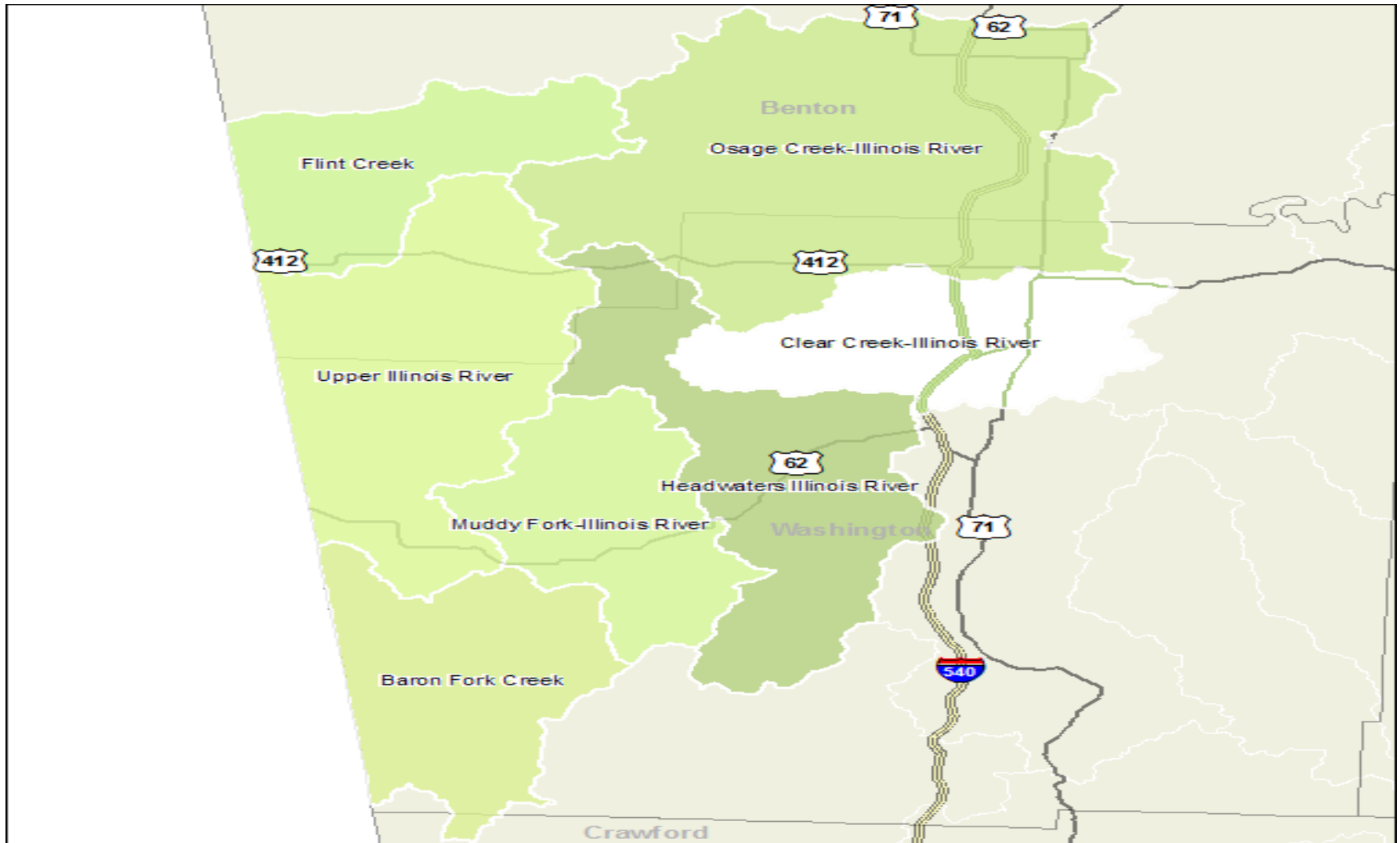
09-1200 FY09 CWA 319(h)



John Pennington and Katie Teague

County Extension Agents – Agriculture/Water Quality

Clear Creek Watershed Location



Project Overview

- A project to engage streamside landowners and all stakeholder groups
 - Urban & Rural
 - Agricultural and Non-Agricultural
 - Homeowners
 - Landowners
 - Businesses
 - Industries
 - Municipalities
- Streamside or riparian landowners are the last line of defense for a stream.
 - Streambank stability
 - Pollutant filtration
 - Wildlife habitat
 - Noticing problems
- There are approximately 1,700 streamside owners
- Streamside owners can do a lot for a stream's health

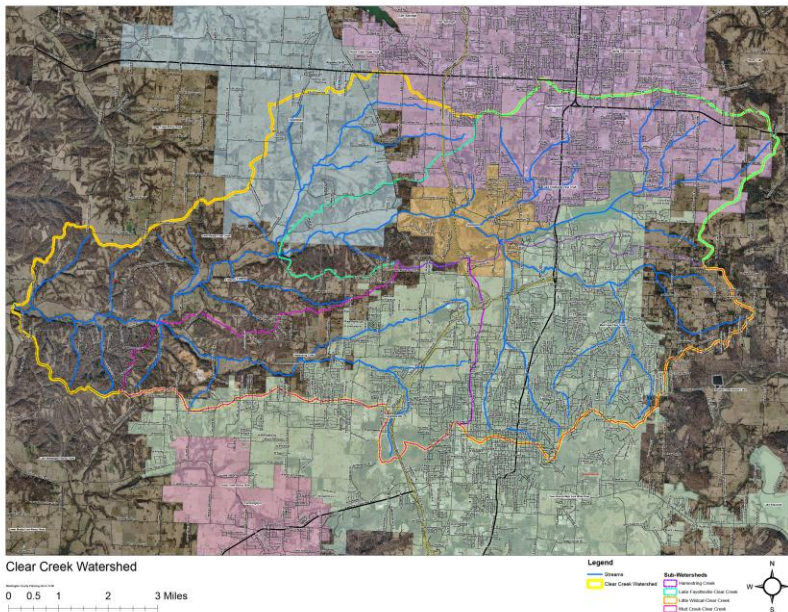


NPS Management Program Elements in Project

- **Agriculture (4.1-4.12)** Direct technical assistance to landowners in targeted watersheds. Provide and improve extensive education and training to promote BMP implementation and to acquaint landowners with conservation practices to reduce runoff, sediment transport
- **Silviculture (5.1 -5.3)** Develop additional mechanisms for delivering BMP implementation training targeted at private landowners and continue to promote incentives for landowners to increase voluntary BMP implementation
- **Surface Erosion (7.9-7.10)** Develop education programs for landowners and developers concerning proper stream corridor management and corridor restoration
- **Household and Business Activities (8.8)** Continue to maintain and implement broad based education programs aimed at increasing awareness and disseminating BMP to urban and rural households and businesses

Grant Project Task 1

- **Planning and Input** – Establish landowner database and collect stakeholder input through focus group meetings.
 - **Utilize the Watershed Approach**



Grant Project Task 2

- **Individual Landowner Riparian Assessments** - Asses the condition of riparian lands, provide information and education on how to improve or maintain these areas, connect landowners with technical assistance needed.
 - 108 Assessments
 - 269 improvements made so far
 - 46 leading to technical assistance beyond me
 - FSA - CREP enrollment
 - NRCS - EQIP enrollment
 - Stream Team
 - Watershed Conservation Resource Center
 - Arkansas Forestry Commission
 - Washington County Environmental Affairs
 - Conservation District



Grant Project Task 3

- **Establish Riparian Management Implementation** – Establish residential, municipal, and rural riparian management demonstration sites, and work with property owners, conservation organizations, technical service providers, municipalities, communities, and the University of Arkansas to encourage proper riparian management.
- Collaborate with the City of Fayetteville to develop a “*streamside protection ordinance*”
 - 15 demo sites
 - 1,200 streamside owners
 - 18 conservation organizations
 - 7 technical service providers
 - 5 municipalities
 - 3 communities
 - University



Grant Project Task 4

- **Public Outreach and Education** - work in a grassroots-style synergistic effort with watershed, conservation, and municipal organizations, and watershed stakeholders to carry out individual contacts, school programs, creek walks, creek cleanups, riparian management workshops, a streamside assessment guide for landowners, media releases, and riparian buffer ordinance input and education meetings.



Grant Project Task 4

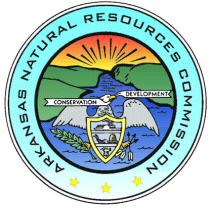
- Bi-monthly newsletter mailed to 1,800 streamside landowners
- 587 participants at 7 creek clean-ups - 5 associated fact sheets
- 169 volunteers for 72 buffer plantings - 3.5 miles buffers installed
- 236 participants in 12 ordinance input meetings
 - 100 % found this process beneficial
 - 91% found education was beneficial for giving ordinance input
 - 98% learned more about functions and values of riparian areas
- 530 participants at 20 other educational programs
- 21 new educational materials in all made so far
- Presented at AWRC and National County Ag Agents Conference

- Still need to complete Streamside Landowners Assessment Guide –
*Stream*A*Syst*

Grant Project Task 5

- **Technology Transfer** - Share successful methods for fostering participation, affecting public policy positively, and inciting BMP implementation and conservation program adoption among riparian landowners with watershed and conservation organizations, county, state, and federal agencies. This project will serve as a model for organizations and agencies that are working to affect conservation practices among riparian landowners throughout the Illinois River Watershed, Beaver Lake Watershed, and Beyond.
 - Showed 3 watershed organizations it is okay to work with tough policy like a riparian ordinance
 - Showing other watershed organizations how to approach the topic of land use planning
 - Helped 1 organization get a better logo
 - Helped 4 organizations have more impactful events
 - Showed the FSA how to identify streamside landowners for the CREP program
 - Showed 2 organizations how to best educate elected officials and involve the public
 - Shared techniques for outreach and education with several other watershed organizations across the state

Partners



Washington County Conservation District



Crop Soil and Environmental Science Club

Sponsors



Southtown Sporting Goods 2

